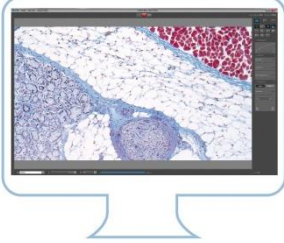




Stability –
giving you a reliable research tool
you can count on.



How to transfer GRYPHAX® software settings?

User can transfer the settings of JENOPTIK GRYPHAX® software to another computer workstation!

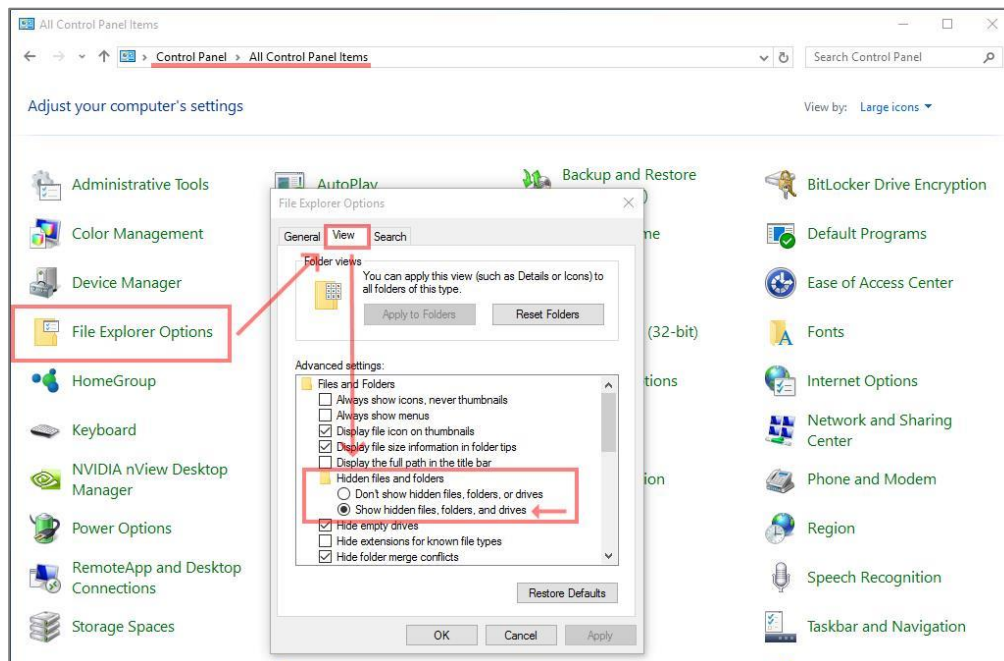
Furthermore, in case of trouble shooting with the JENOPTIK GRYPHAX® software, you can rename the file and restart the software with default settings again.

To transfer or rename settings, you need to copy or rename the settings file: "lastsession.ini" under:

Windows OS "C:\ProgramData\Jenoptik\PROGRES GRYPHAX\profiles"
Mac OS "MacHDL\Library\Application Support\Jenoptik\PROGRES GRYPHAX..."
Linux OS "/var/lib/Jenoptik/PROGRES GRYPHAX/profiles/..."

For WINDOWS operation systems please follow the steps below to copy or rename JENOPTIK GRYPHAX® software settings file:

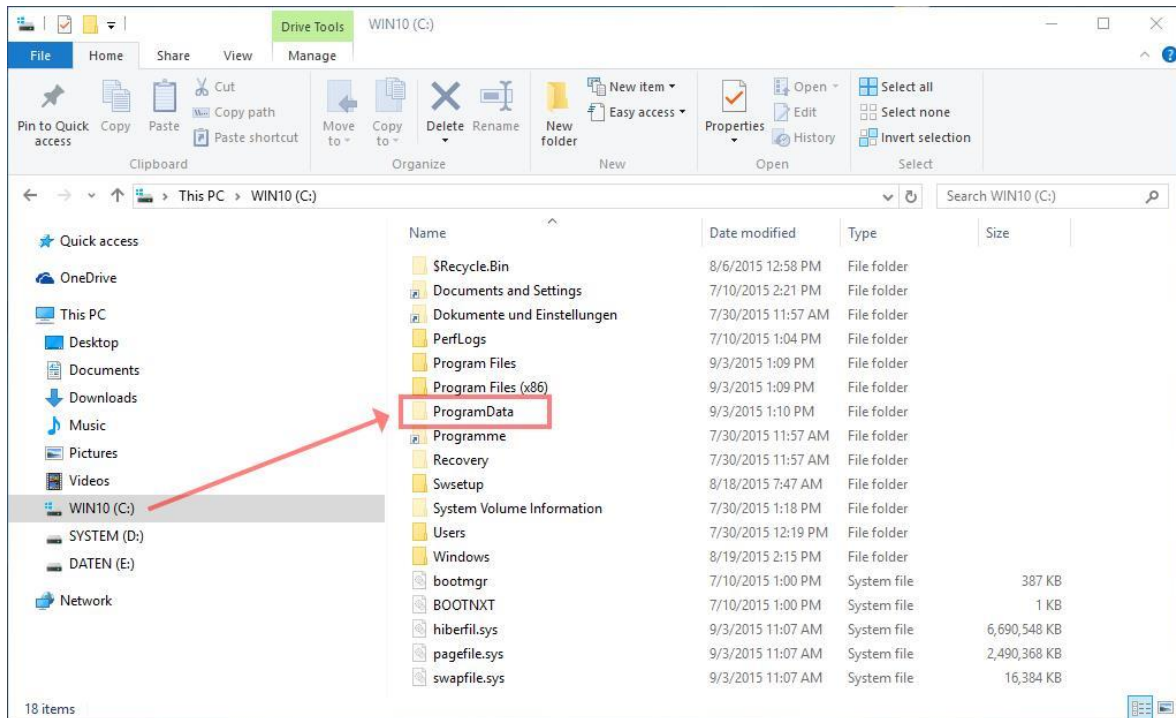
- (1) Navigate to the **control panel** and activate: "show hidden folders" on your computer



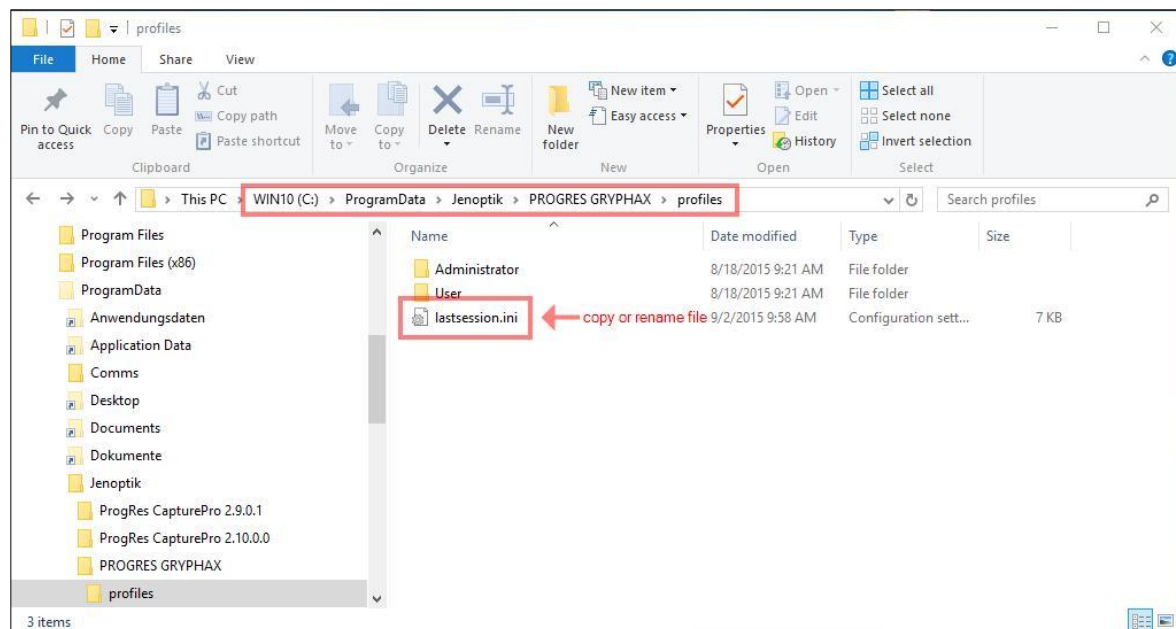
Release Date: 13.08.2019



(2) Navigate to drive: "C:" and search and open hidden system folder: "ProgramData"



(3) Rename or copy settings file: "lastsession.ini" under:
"C:\ProgramData\Jenoptik\PROGRES GRYPHAX\profiles"



Please note again: Delete or rename of settings file "lastsession.ini" will lose all previous software settings and default settings will be used instead!

Thank you for your attention!
Your JENOPTIK GRYPHAX® Team

Release Date: 13.08.2019